

Terminal 021000-001 two places, Note 1.

Note 1:

Equipped with solder posts or 4-40 studs as specified.

Note 2:

Arrow indicates potted side. Potting may heap up .160 beyond dimension shown.

Note 3:

+ indicates collector for switches, positive for DC output sensors. For AC output sensors the + lead will be nearly in phase with current entering the sensor on the potting side.

C case

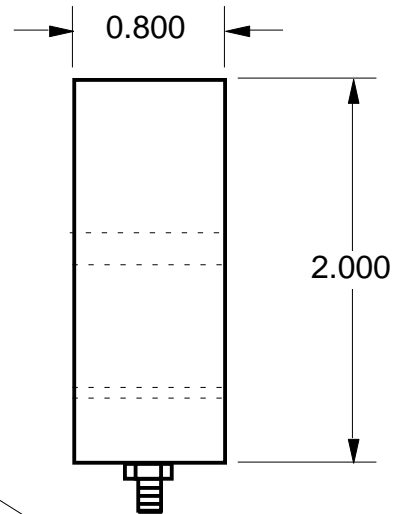
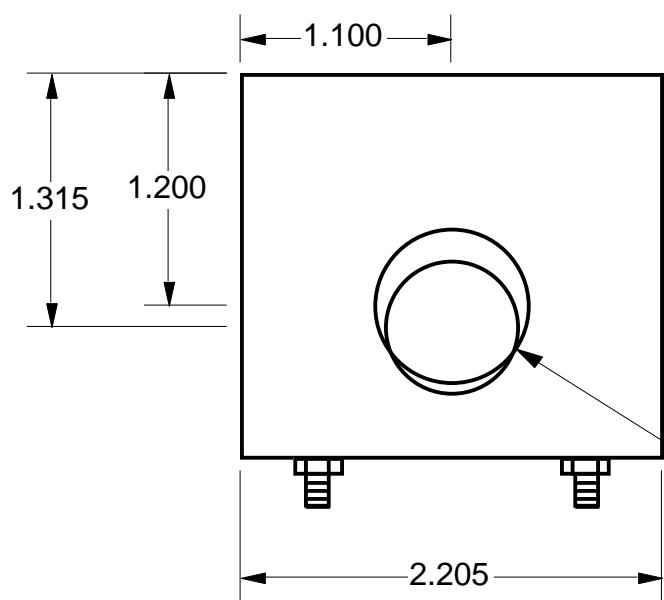
Smith Research & Technology, Inc.



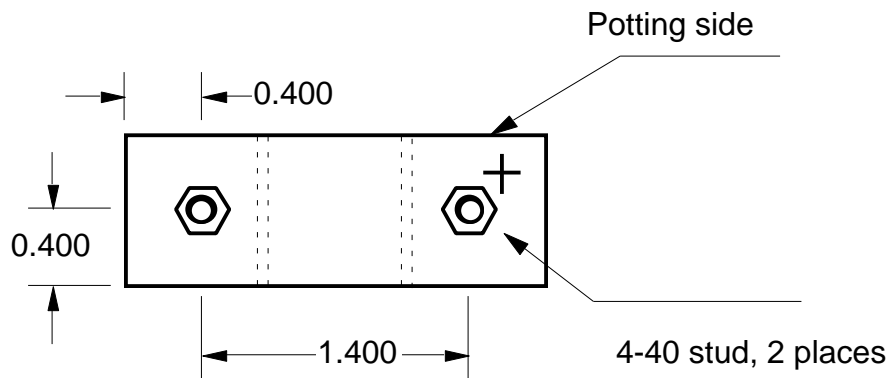
3109 N. Cascade Ave., Bldg. #201
 Colorado Springs, CO 80907-5190
 719 634 2259, FAX 719 634 2601

Inductive AC voltage and current sensors

Friday, September 25, 1998 at 09:44:11



Unit may be shipped with 0.7 or 0.8 inch diameter hole depending on the application.



Note:
 + indicates collector for switches, positive for DC output sensors. For AC output sensors the + lead will be nearly in phase with current entering the sensor on the potting side.

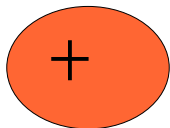
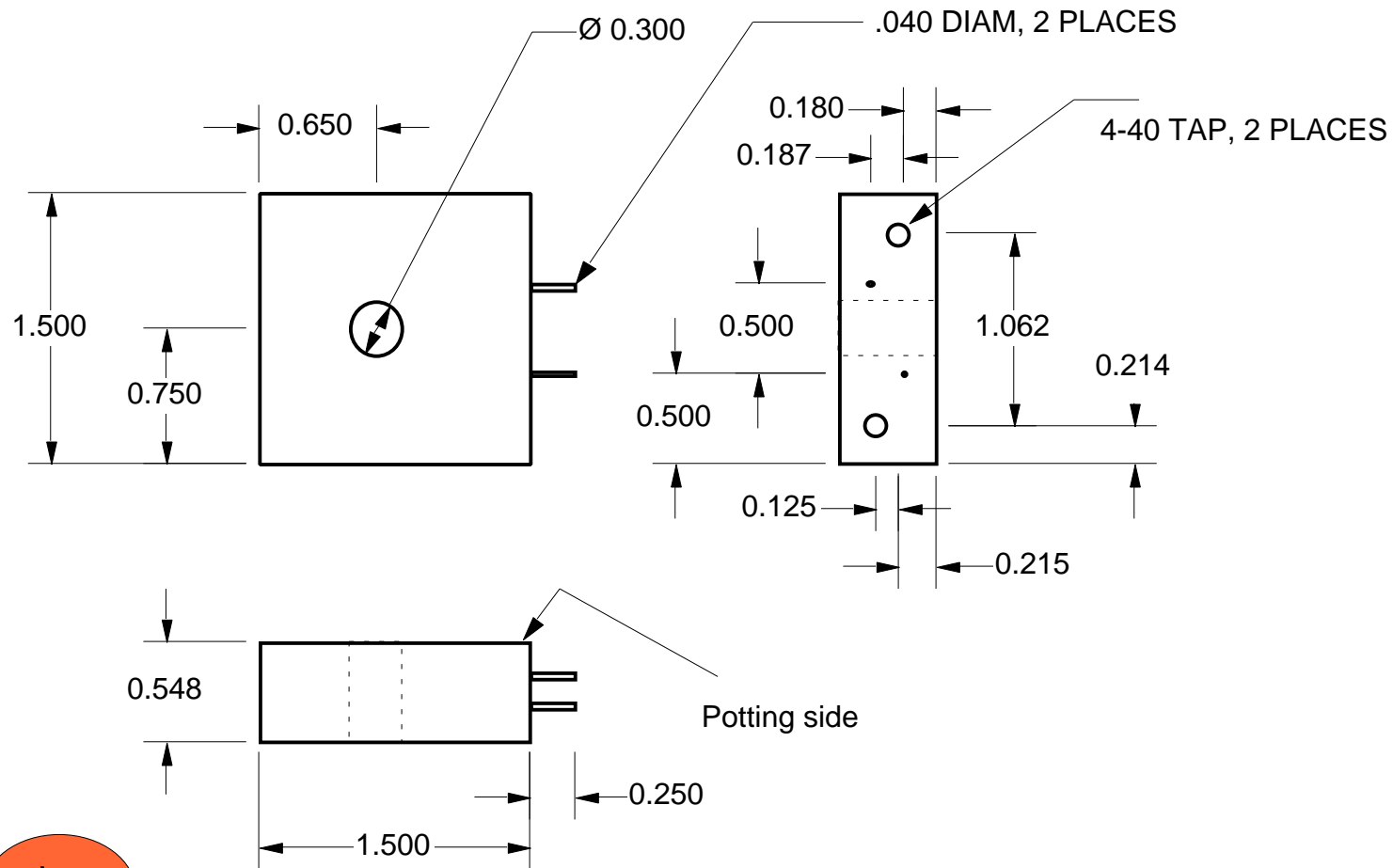
D case

Smith Research & Technology, Inc.



3109 N. Cascade Ave., Bldg. #201
 Colorado Springs, CO 80907-5190
 719 634 2259, FAX 719 634 2601

Inductive AC voltage and current sensors



Note 3:

+ indicates collector for switches, positive for DC output sensors. For AC output sensors the + lead will be nearly in phase with current entering the sensor on the potting side.

Square C case

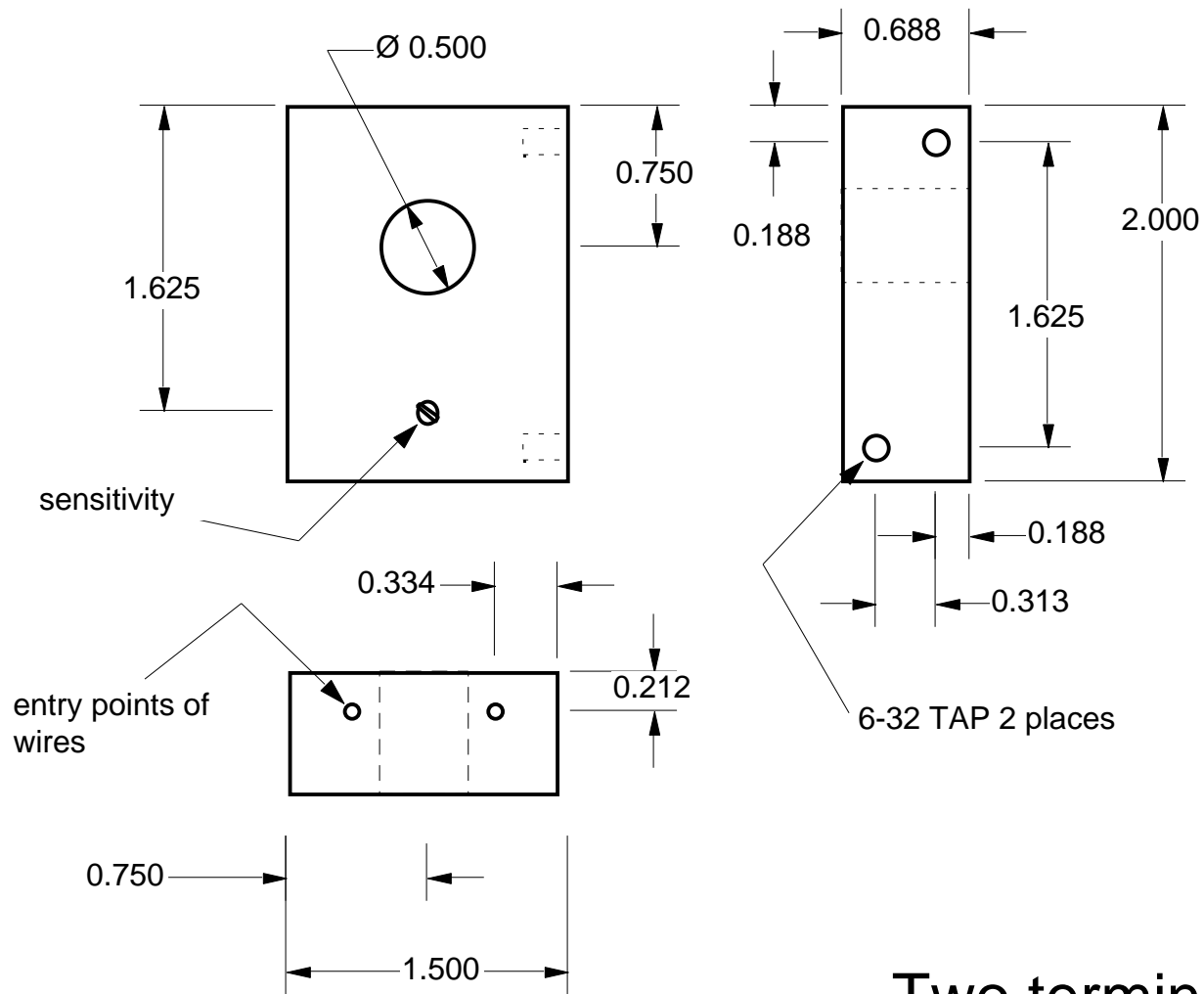
Smith Research & Technology, Inc.



3109 N. Cascade Ave., Bldg. #201
 Colorado Springs, CO 80907-5190
 719 634 2259, FAX 719 634 2601

Inductive AC voltage and current sensors

Thursday, September 17, 1998 at 10:34:44



Notes:

1. Sensitivity adjustment not provided on all models.
2. Switched wires are 12 inch pigtailed of AWG 16 wire.

Dimensions in inches.

Thursday, September 17, 1998 at 10:46:11

Two terminal switch

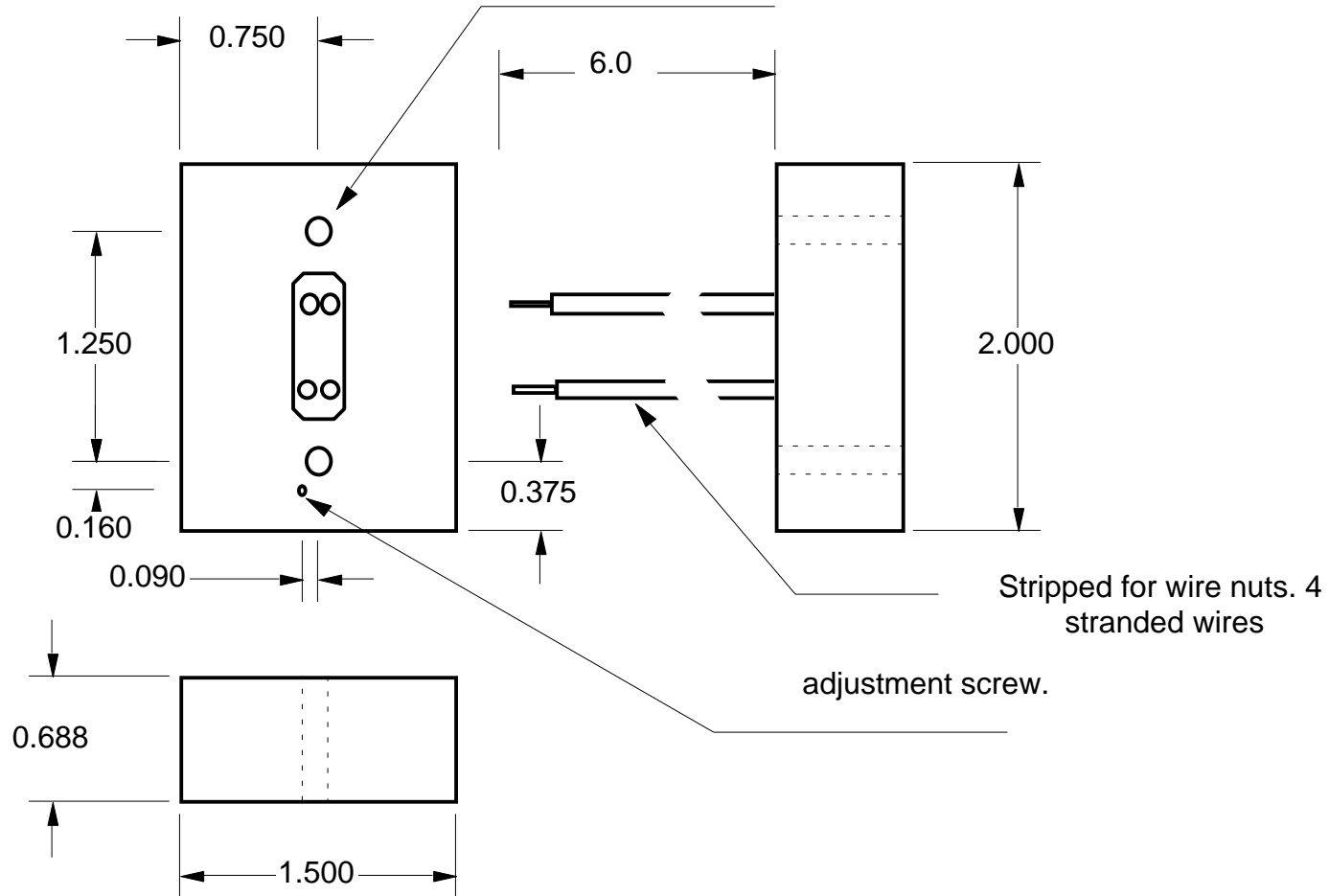
Smith Research & Technology, Inc.



3109 N. Cascade Ave., Bldg. #201
 Colorado Springs, CO 80907-5190
 719 634 2259, FAX 719 634 2601

Inductive AC voltage and current sensors

Drill thru 0.144ø
2 places for #6 mounting screws.



Four wire voltage actuated switch

Dimensions in inches.

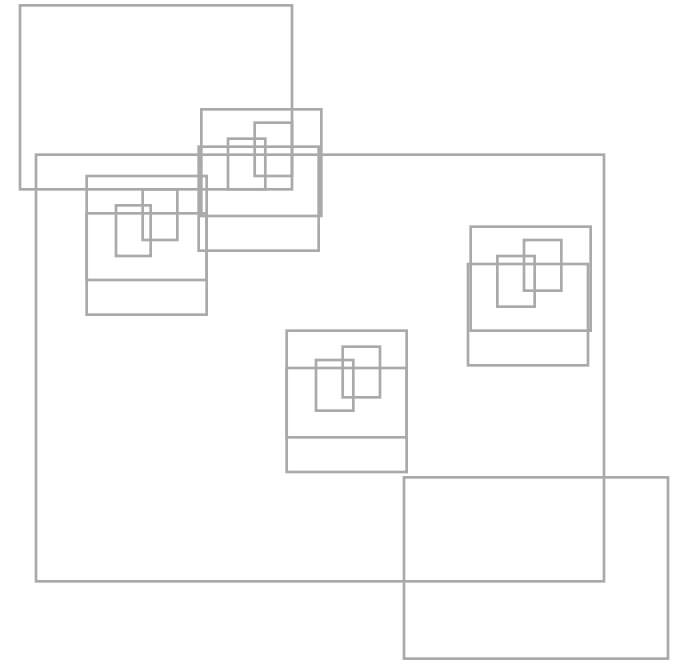
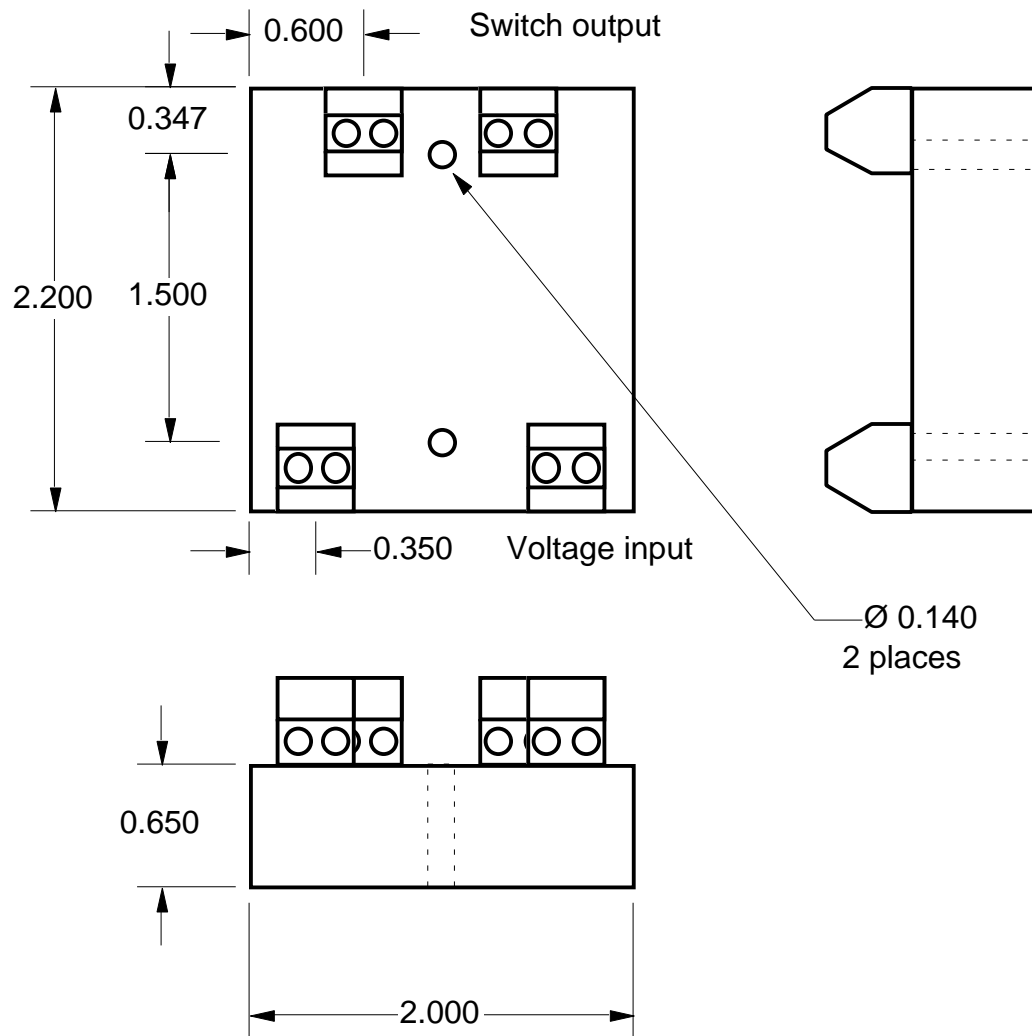
Thursday, September 17, 1998 at 10:50:51

Smith Research & Technology, Inc.



3109 N. Cascade Ave., Bldg. #201
Colorado Springs, CO 80907-5190
719 634 2259, FAX 719 634 2601

Inductive AC voltage and current sensors



Series VAS-DM4S AC voltage actuated switch

Connectors shown may be replaced with equivalent smaller units which accept the same wire size.

Based on Robison POS20002200S27

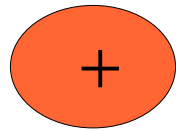
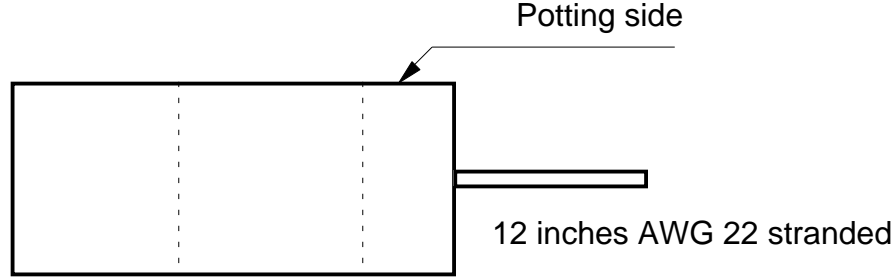
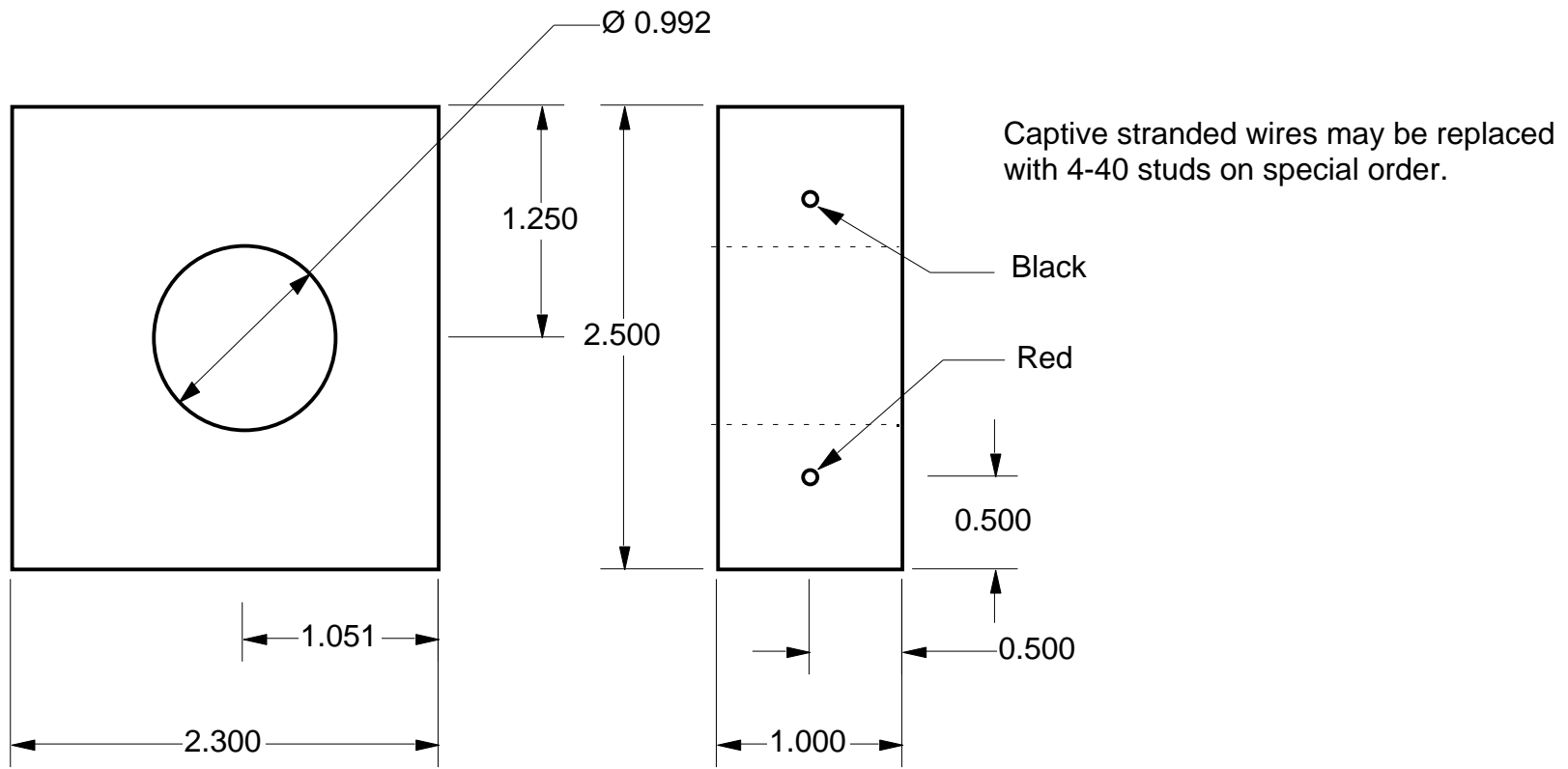
Thursday, September 17, 1998 at 10:59:15

Smith Research & Technology, Inc.



3109 N. Cascade Ave., Bldg. #201
Colorado Springs, CO 80907-5190
719 634 2259, FAX 719 634 2601

Inductive AC voltage and current sensors



Note 3:
 + indicates collector for switches, positive for DC output sensors. For AC output sensors the + lead will be nearly in phase with current entering the sensor on the potting side.

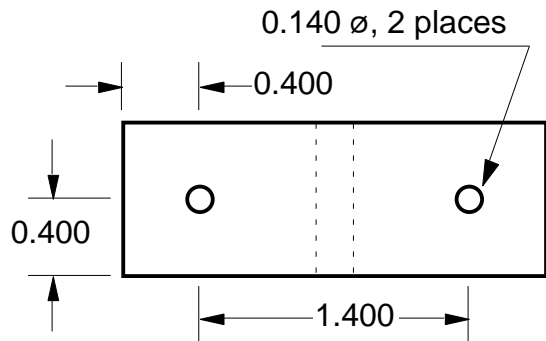
Friday, September 25, 1998 at 10:03:15

E case

Smith Research & Technology, Inc.

SRT 3109 N. Cascade Ave., Bldg. #201
 Colorado Springs, CO 80907-5190
 719 634 2259, FAX 719 634 2601
 Inductive AC voltage and current sensors

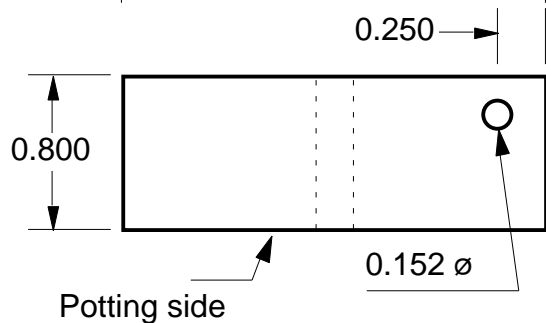
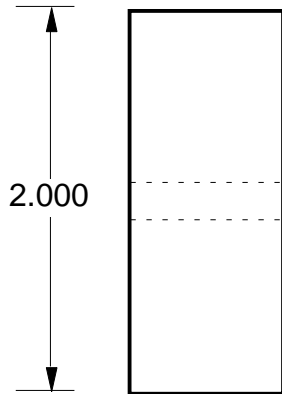
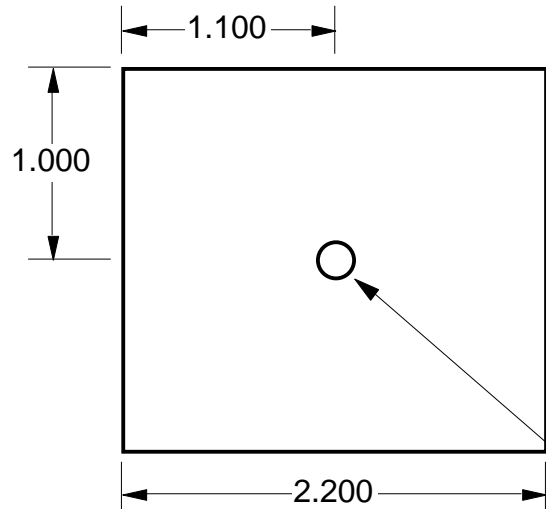
Dimensions in inches, ± 0.010 unless noted.



Polarity statement for 4-20mA output sensors:
Increasing input amplitude will draw more current from the source. Output polarity can be reversed.

Polarity statement for DC output sensors:
Increasing input amplitude will make the black output wire positive compared to the white.

Polarity statement for AC output sensors:
The voltage on the black output conductor will lead the phase of the voltage applied to LINE 2 by less than 90 degrees. Except for phase, white and black conductors are equivalent.



Mounting hole for #10 screw, $\phi 0.190$ minimum centered both ways. A change to two-hole mounting is anticipated.

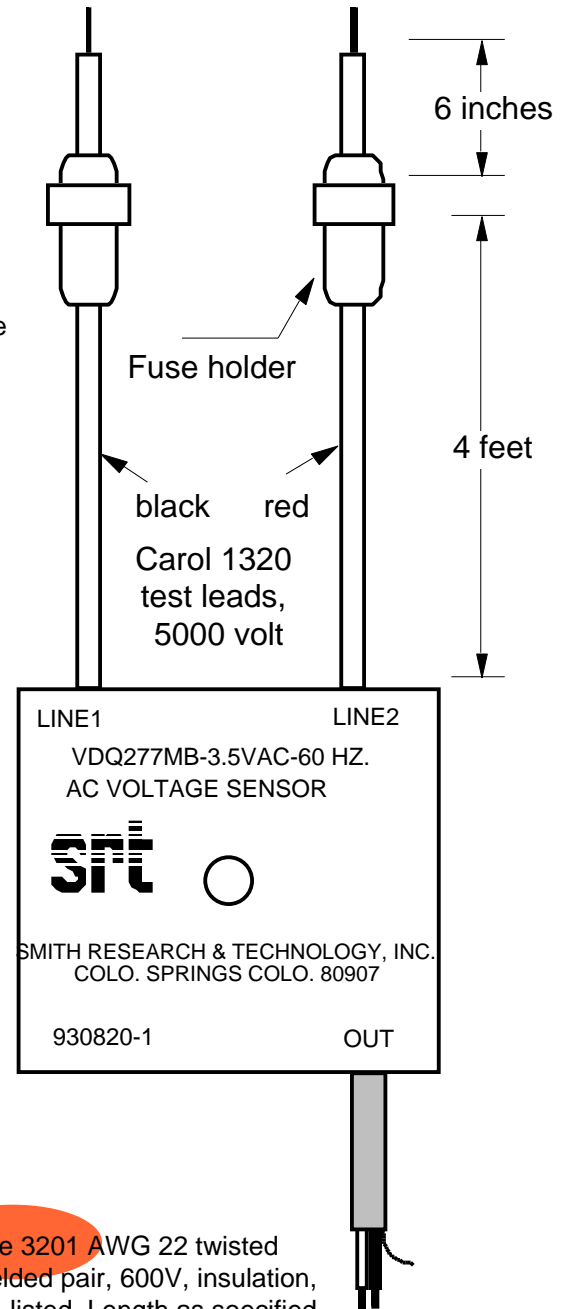
D-case voltage sensors

Smith Research & Technology, Inc.



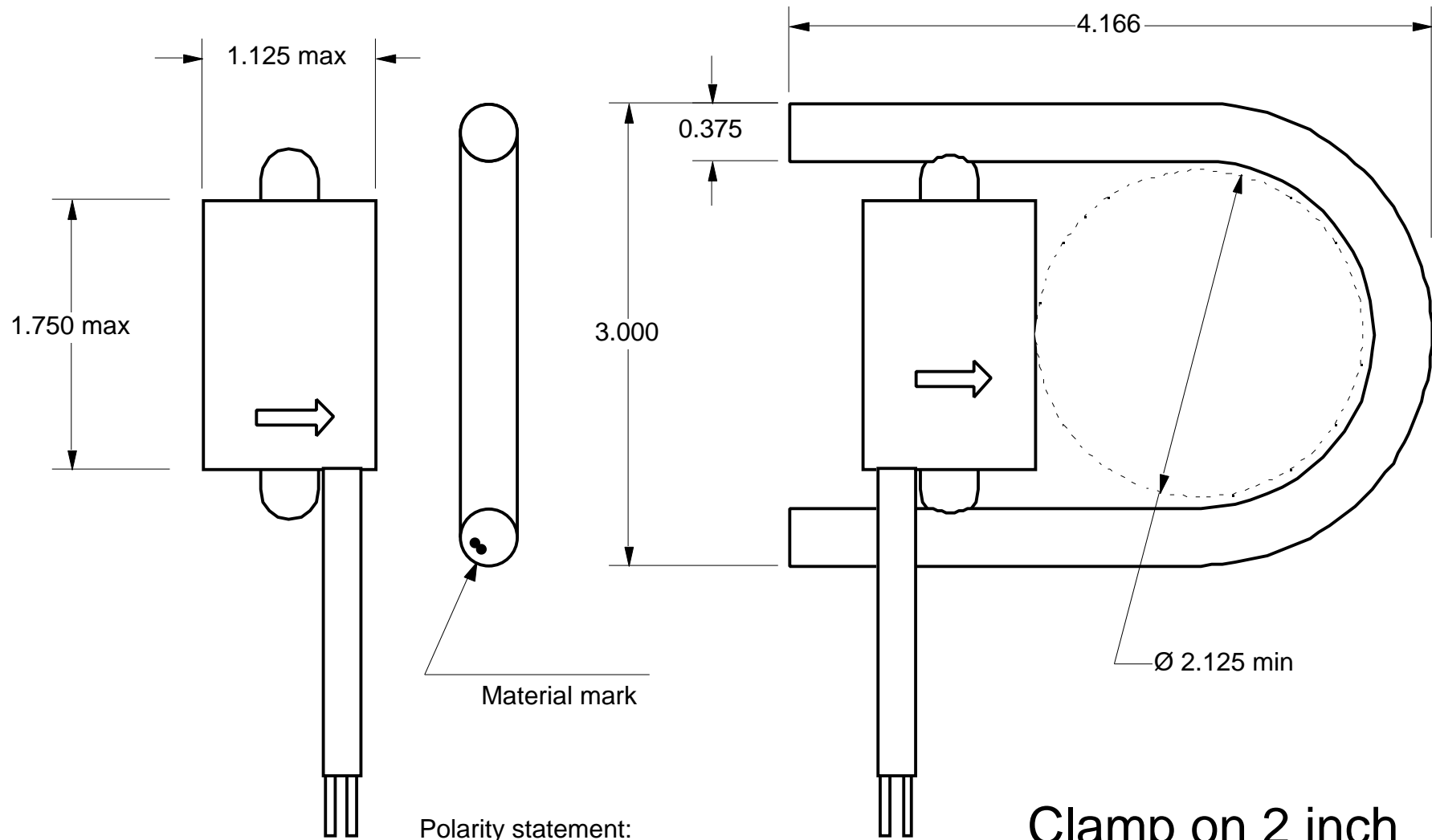
3109 N. Cascade Ave., Bldg. #201
Colorado Springs, CO 80907-5190
719 634 2259, FAX 719 634 2601

Inductive AC voltage and current sensors



Type 3201 AWG 22 twisted shielded pair, 600V, insulation, U.L. listed. Length as specified, 30 feet maximum.

Dimensions in inches.



The voltage on the black output conductor will lead the phase of the current in the direction of the arrow by less than 90 degrees. Except for phase, white and black conductors are equivalent.

Clamp on 2 inch

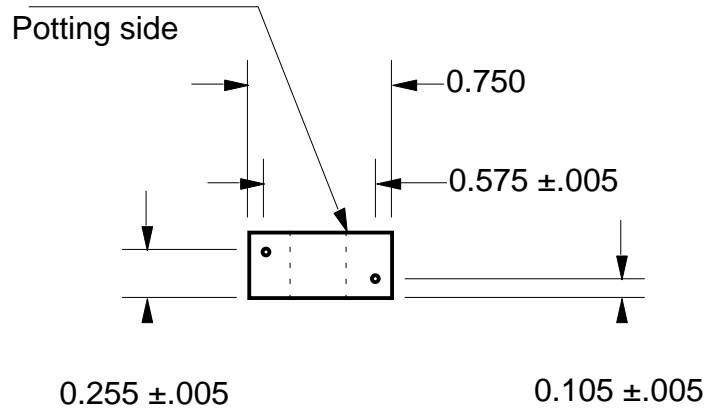
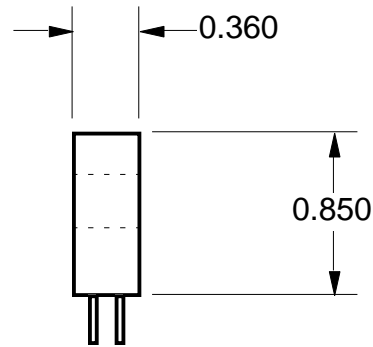
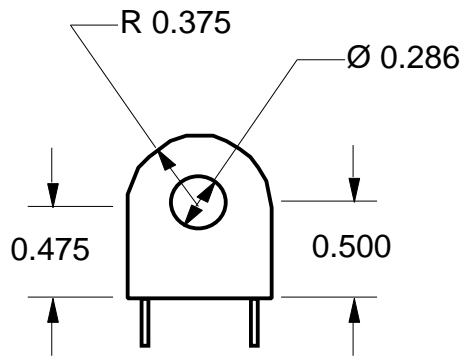
Smith Research & Technology, Inc.



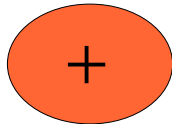
3109 N. Cascade Ave., Bldg. #201
 Colorado Springs, CO 80907-5190
 719 634 2259, FAX 719 634 2601

Inductive AC voltage and current sensors

April 14, 1999



- Pins available:
- 1 $.032\text{Ø} \times .140$ (PC)
 - 2 $.038\text{Ø} \times .062$ with $.050$ tip (Cable mount)
 - 3 $.040\text{Ø} \times .250$ (PC) (shown)



Note 3:
 + indicates collector for switches, positive for DC output sensors. For AC output sensors the + lead will be nearly in phase with current entering the sensor on the potting side.

A3 case

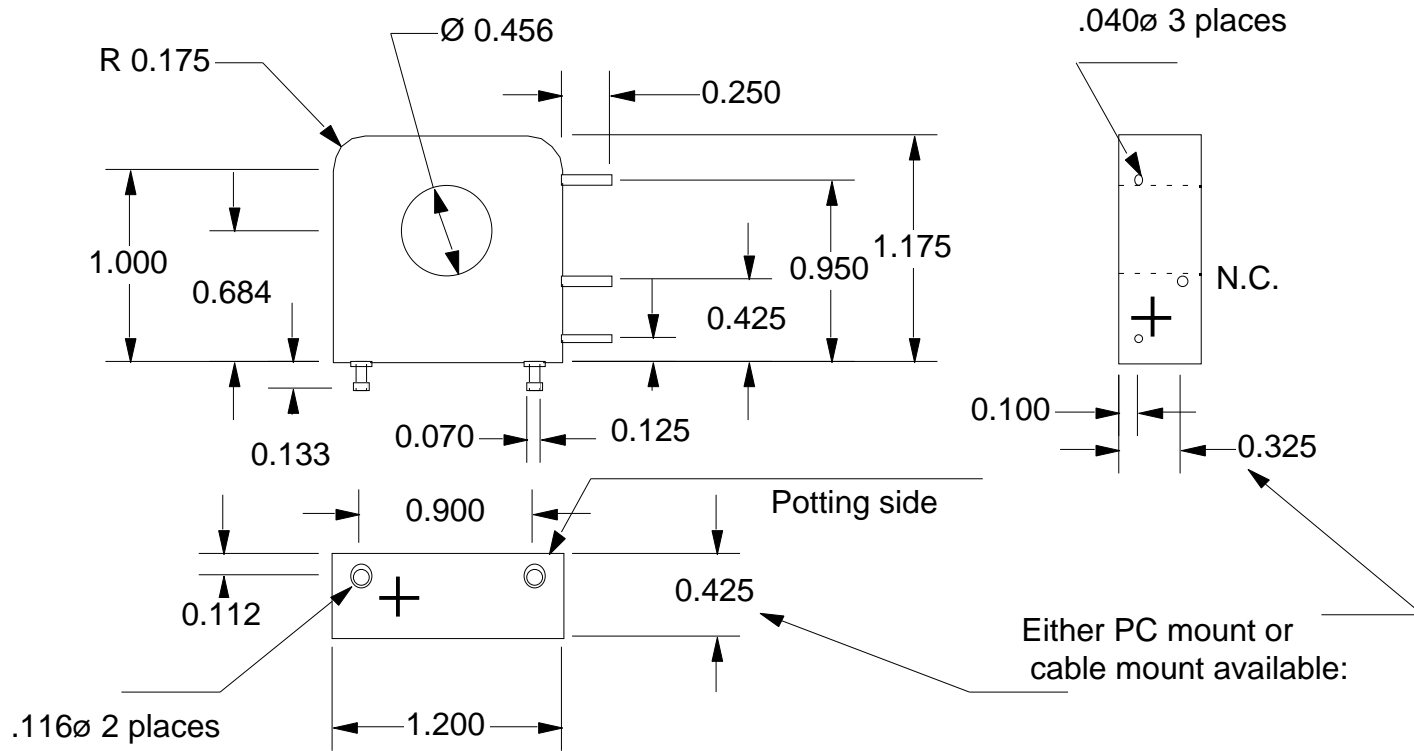
Smith Research & Technology, Inc.



3109 N. Cascade Ave., Bldg. #201
 Colorado Springs, CO 80907-5190
 719 634 2259, FAX 719 634 2601

Inductive AC voltage and current sensors

Thursday, September 17, 1998 at 11:51:17



B2 case

Note 3:

+ indicates collector for switches, positive for DC output sensors. For AC output sensors the + lead will be nearly in phase with current entering the sensor on the potting side.

Smith Research & Technology, Inc.



3109 N. Cascade Ave., Bldg. #201
 Colorado Springs, CO 80907-5190
 719 634 2259, FAX 719 634 2601

Inductive AC voltage and current sensors

Wednesday, September 30, 1998 at 16:19:27

The SPMS requires a different scale and will be on another drawing

SPMS

Smith Research & Technology, Inc.



3109 N. Cascade Ave., Bldg. #201
Colorado Springs, CO 80907-5190
719 634 2259, FAX 719 634 2601

Inductive AC voltage and current sensors